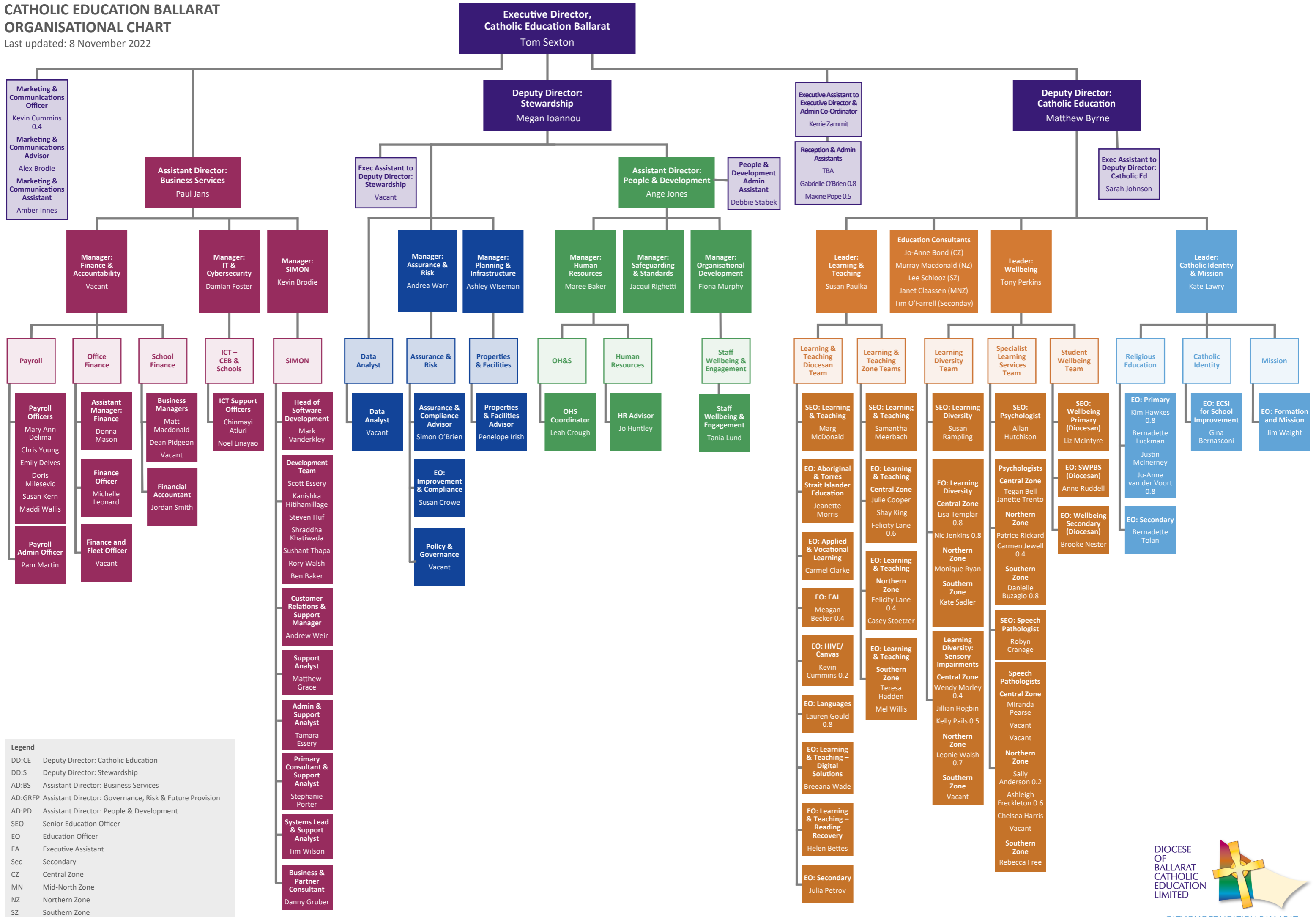


# CATHOLIC EDUCATION BALLARAT ORGANISATIONAL CHART

Last updated: 8 November 2022



**Legend**

- DD:CE Deputy Director: Catholic Education
- DD:S Deputy Director: Stewardship
- AD:BS Assistant Director: Business Services
- AD:GRFP Assistant Director: Governance, Risk & Future Provision
- AD:PD Assistant Director: People & Development
- SEO Senior Education Officer
- EO Education Officer
- EA Executive Assistant
- Sec Secondary
- CZ Central Zone
- MN Mid-North Zone
- NZ Northern Zone
- SZ Southern Zone

